

Inv. Tony Kavan #340

HUMAN TRAFFICKING

Training Objectives:

- Overview (What are we up against?)
- Define Human Trafficking
- Differentiate Between Human Trafficking and Human Smuggling
- Recognize Populations Vulnerable to Human Trafficking
- Recognize Indicators of Human Trafficking
- Response

Overview:

- 3rd largest criminal enterprise in the world (21 million people)
- 2nd largest criminal enterprise in the US (40,000 people)
- Fastest growing criminal enterprise in the US (14,000 to 17,000 trafficked into the US every year)

Profitable Criminal Enterprise

- [\$150 Billion/year]
- \$500,000 – Omaha
- \$1,000/day – Omaha

Current Research:

- ④ 41% of sex buyers used a woman who was controlled by a pimp.
- ④ 66% of sex buyers stated that a majority of women in prostitution are lured, tricked, or trafficked.

*"Comparing Sex Buyers with Men Who do not Buy Sex: New Data on Prostitution and Trafficking" –Melissa Farley et al.

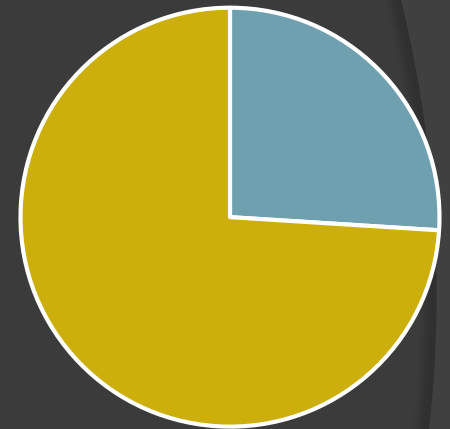
National data



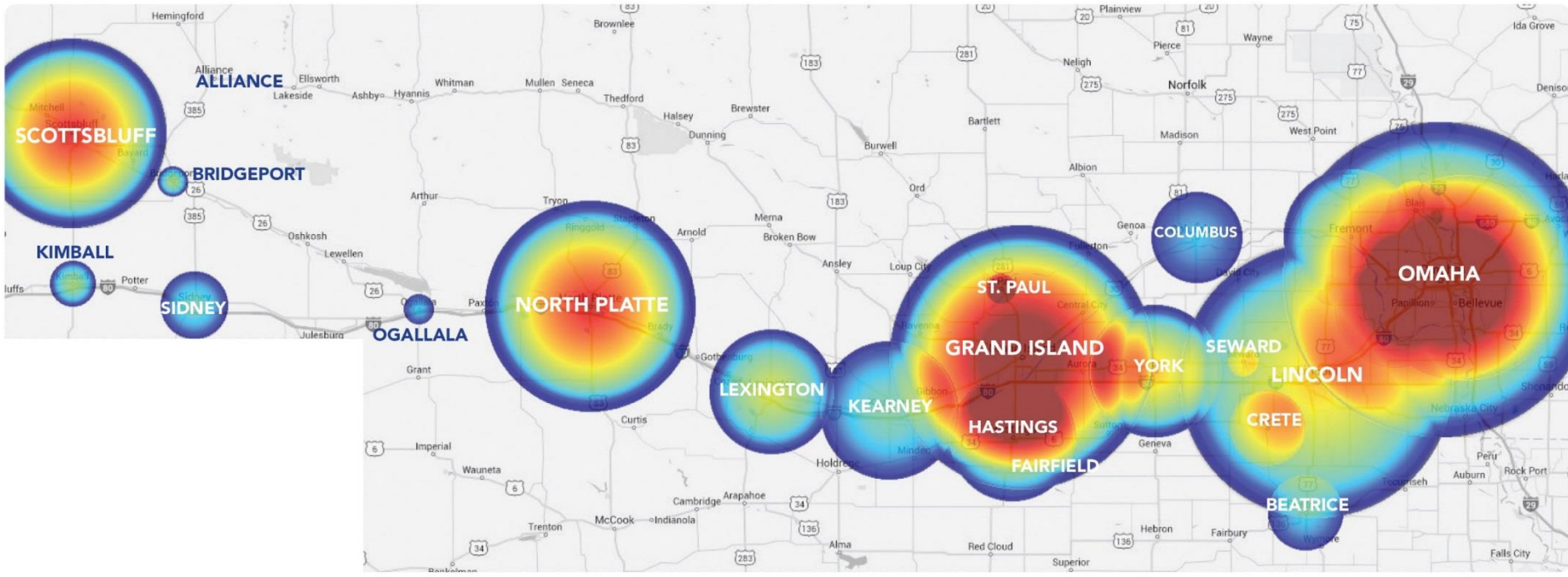
1 in 5 of reported missing children in 2015 are likely victims of sex trafficking. This is over 2,300 children. This is up from 1 in 6 in 2014.



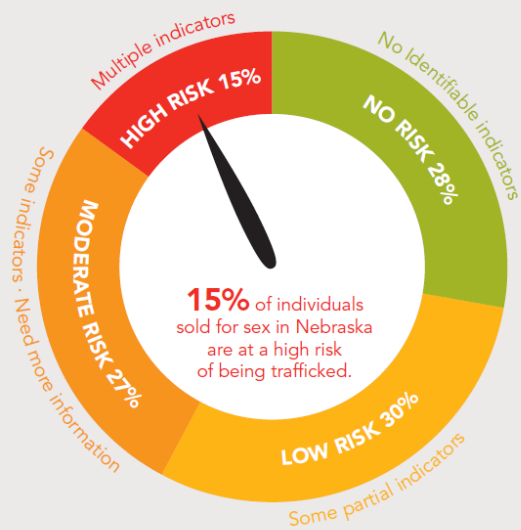
1 in 3 runaways will be approached by traffickers within 72 hours



74% were in the care of child welfare when they went missing



COMMERCIAL SEX ACROSS NEBRASKA



Since **900** individuals are sold for sex each month in

SOLD

Nebraska

this means

135 of them are at **high risk** of being trafficked.

Predicting Trafficking Risk

NHTTF Principle No. 1

“Human trafficking, which is modern-day slavery in violation of the Constitution of the United States of America, is an **abomination**, and must be substantively addressed in Nebraska.”



Definitions:

- ⦿ **Human Trafficking** -The act of recruiting, harboring, transporting, providing, or obtaining a person for labor, services, or commercial sex acts by any means for the purpose of exploitation, involuntary servitude, debt bondage, slavery, or ANY commercial sex act involving a MINOR.

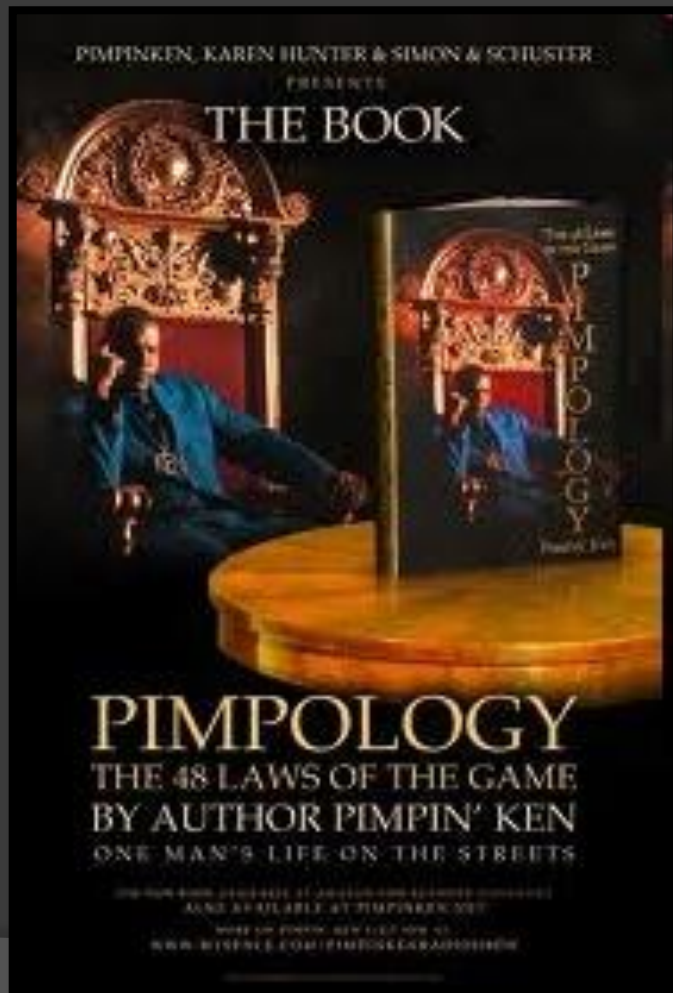
Definitions:

- ⦿ **Labor** – Agricultural, domestic service, janitorial, hospitality, construction, and elder care.
- ⦿ **Human Smuggling** – Is the transportation or illegal entry of a person across an international border. **Is done with the consent of the smuggled party**, and ends after the border has been crossed with the smuggled party being free to leave.

Victimology:

- ⦿ Traffickers prey on people with little or no safety net
 - Poverty
 - Political instability/armed conflict
 - Natural disasters
 - Runaways
 - Immigrants
 - Mental illness
 - Addiction

Master Manipulators



Law 5

Prey on the Weak

“Weakness is the best trait a person can find in someone they want to control. If you can’t find a weakness, you have to create one. You have to tear someone’s ego down to nothing before they will start looking to you for salvation.” – Pimpin’ Ken

Indicators:

- ⦿ “Red Flags” focus on trafficker’s method of control
 - Personal documents
 - Hold ID and travel documents to restrict freedom of movement
 - Wages
 - IF victims get paid, they do not control their own money.

Indicators:

⦿ Safety

- Traffickers harm or threaten harm against victims or loved ones
- Signs of physical abuse
- Threatened with deportation or arrest
- May appear fearful or distrustful of law enforcement

Indicators:

⦿ Freedom

- Defers to someone else to speak for them
- Appears to be coached on what to say
- Isn't allowed to socialize or call home
- Isn't free to leave

⦿ Working and living conditions

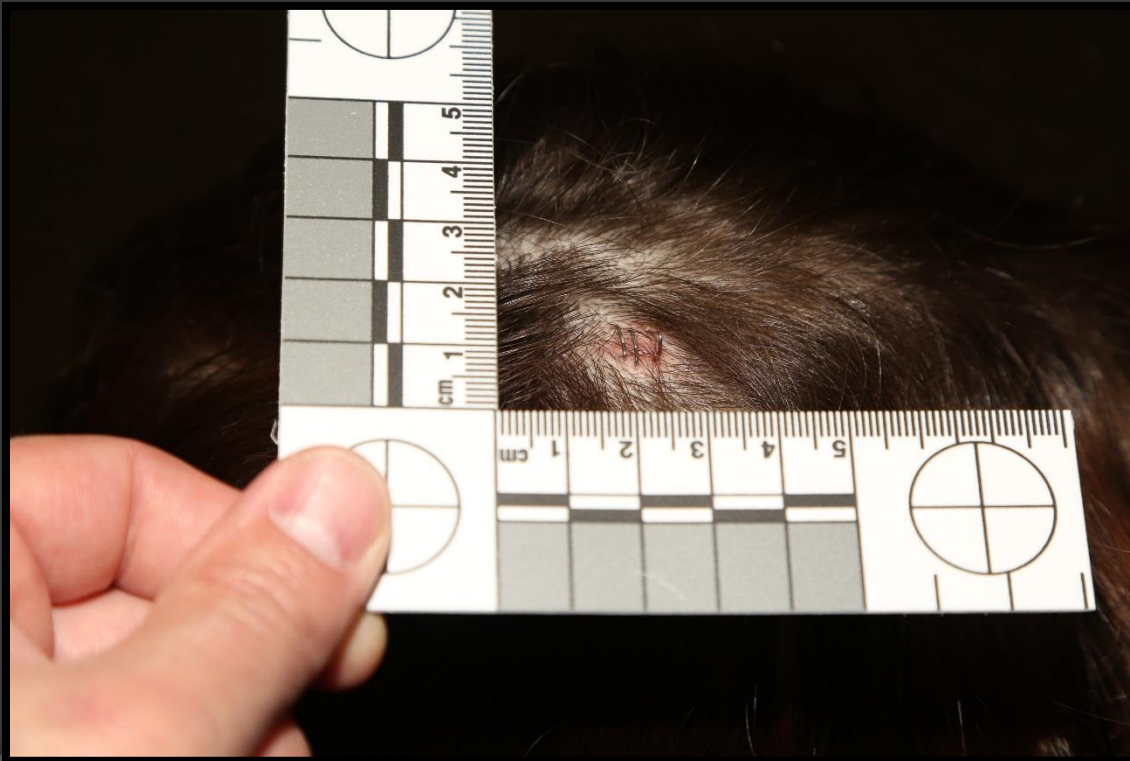
- Deprived of food, water, sleep, medical care or satisfactory living conditions

Indicators:

- ⦿ A minor engaged in commercial sex

Indicators:

- Signs of physical abuse



Indicators:

● Tattoos and brandings



“Terms of the Trade”

Terminology:

- “The Game”
- Pimp, aka: Daddy, Mack/Mac, Boyfriend/girlfriend, King
- Wife-in-law or Wifey
- Stable
- Buyer, aka: John
- Turned out
- Renegade
- Circuit
- 304 or #real304 (Hoe)
- #RHGO or #RPGO (Real “hoeing” or “pimping”)

Peace Officer/Public Challenges

- ⦿ Victims may initially be uncooperative.
- ⦿ Initial responses may be a “trained” or a “canned” story.
- ⦿ They may have endured physical or psychological imprisonment.
- ⦿ Loyalty to the trafficker.
- ⦿ Fear deportation.
- ⦿ Threats to families/loved ones.
- ⦿ Multiple traumatic events.

Response:

- If trafficking is suspected contact a shelter or victim advocacy group
- National Human Trafficking Resource Center Hotline: 888-373-7888
- To report suspected trafficking (Blue Campaign): 866-347-2423
- Call 911

Partners:

- ⦿ Omaha Women's Fund
- ⦿ Salvation Army Safe-T Program
 - Alicia Webber NHTTF Safe-T Coordinator
- ⦿ Nebraska Alliance of Child Advocacy Centers

Questions?

polarisproject.org

Omahawomensfund.org
(Nothing About Us Without Us)

nebraskacacs.com